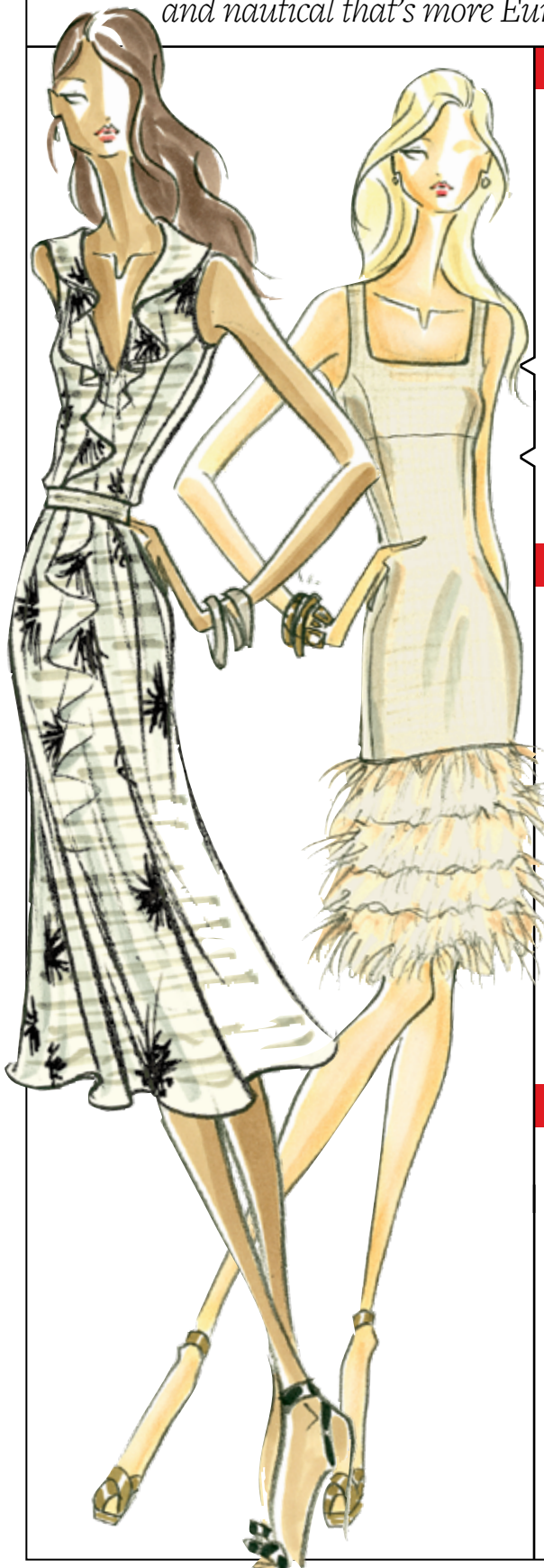


*The trends are in. And...we're off! Loving Gatsby. Wild over safari. Flirting with pretty. Crazy for curvy. Can't get enough sunshine colors; shots of razzle-dazzle; and nautical that's more Euro than prep.*



## 1 GREAT GATSBY

Cool girls are channeling Ms. Daisy. Taking the twenties for a 21st-century spin. In romantic pales. All flowery, fluttery, dotty, drapey; ruffled, flounced and feather-hemmed.

- **executive** Slubbed rattan 3-piece suiting: kissing-front jacket, peek-a-boo skirt, boot-cut trouser
- **dots** Ivory silk chiffon lurex-dotted cami
- **dandy** Tweed jacquard jacket & feather-hemmed flapper dress
- **gardenia** Ivory organza-trimmed twins
- **impromptu** 2-piece ivory sheer chiffon floral dress
- **airy** White variegated-stripe blouson card

## 2 OUT OF AFRICA

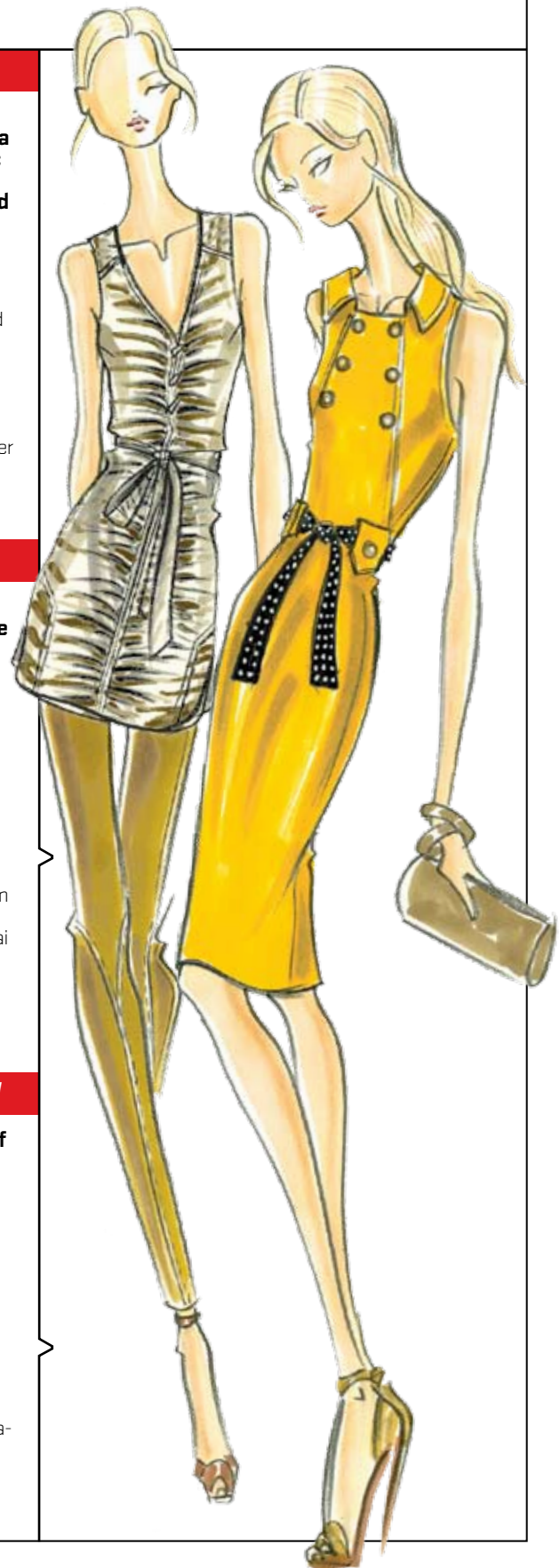
Get your safari on. It's major. More city than savannah. More wicked than wild. Cool, crisp, easy. Done with all the iconic details you love. In super-luxe fabrics and savvy animal prints.

- **parchment** Stretch cotton braid-belted shirtdress
- **betula** Espresso cotton leather-drawstring card
- **suave** Crepe de chine zebra print sashed tunic
- **felicity** White washed denim jean jacket
- **soba** Rattan coated silk habutai belted trench
- **putty** Rattan cotton canvas Bermuda short
- **croc** Silk habutai croc-print drawstring-sleeve shirt

## 3 MELLOW YELLOW

The perfect lemon. A splash of sunshine. Coquettish. Stylish. Wildly becoming. The dishiest shade of spring. Fresh and pretty with black and white. Worn over, under and on its own.

- **messina** Lemonade boot-cut trouser
- **lucent** Lemonade retro-60s dress
- **sphere** Colorblocked short A-line skirt
- **lavish** Lemonade tweed peek-a-boo jacket
- **lemonade** Lightweight jersey curve-banded tee



# SPRING 2012 TRENDS

## 4 SCUBA GEAR

**A trend that runs deep. Inspired by the curves of the wet suit. Sporty. Sexy. Second-skin. Loosely interpreted in silos that sculpt the body. And a color of ocean we call scuba blue.**

- **innocent** Ivory stretch tech corset-styled cami
- **edgy** Black ponte knit belted cowlneck sheath
- **believe** White geometrically-sculpted sheath
- **scuba** Blue/natural silk tweed one-button jacket
- **octane** Black denim knit ankle-length legging

## 5 SAIL AWAY

**The new nautical. Less prep. More Portofino. Euro-chic in scroll prints, tux-styled whites, tweed suiting, stripes of a different color and the coolest cropped jean on the Riviera.**

- **cleopatra** Silk scroll-print one-shoulder top
- **believe** White 3-piece suiting: tuxedo-styled jacket, curve-seamed skirt, boot-cut pant
- **admiral** Navy/white tweed skirt suiting: cardigan-styled jacket, flared-back skirt
- **drift** Light blue washed denim cropped roll-cuffed jean
- **bonbon** Colorblock striped belted jersey card

## 6 POP CULTURE

**Firecracker brights. The new IT-shades. Flashing. Sizzling. Supersaturated. Popping your wardrobe with pure, clean, joyful colors that kick it up to a whole new level of WOW!.**

- **safari red** Canvas ruffle-trimmed topper & sleeveless sheath
- **tangerine** Washed denim skirt suiting: cutaway jacket, short A-line skirt
- **bliss** Garment-washed stretch twill ankle-length jean
- **macaw** Military-styled card and rib-trimmed twins
- **willow** Jade rayon jersey knit casual V-neck dress

## 7 NATURAL WOMAN

**Say bye-bye to the boy's club. Hello to pull-out-all-stops pretty. Find full skirts, eyelet suits, peplum waists, a flirty 50s twinset, a little glimmer and a lot of pink.**

- **harlow** Ivory cotton twill belted topper
- **travertine** Rattan cap-sleeve full-skirt dress

- **nikita** Black eyelet skirt suiting: jewelneck jacket, full pleated skirt
- **fame** Black/ivory/natural striped canvas topper & belted peplum blouse
- **madison** Black/natural cross-dyed canvas skirt
- **astor** Bronze metallic overlaid shell pink skirt
- **shell** Pink Retro-50s card and cami twins

## 8 RAZZLE DAZZLE

**Don't spare the glitter. It's on call 24/7. Stock-up on sequins, beads, patina and shine; little pours of molten jersey; a leather topper that glimmers; a boyfriend jacket that glows.**

- **memento** Gold-sequined rattan short knit skirt
- **porcelain** Crinkled parchment metallic boyfriend jacket
- **dusted** Birch/silver metallic ribknit-appliquéd jersey twins
- **antique** Silver-beaded sheer black silk georgette blouse
- **nifty** Silver/gold dusted parchment leather drape-front topper

## Spring 2012 Colors:

*Perfect little palette. All pure, crisp and pretty with hot pops of bright and a cool dust of shimmer. Standouts:*

- magenta** crayola bright
- macaw** tropical lime
- lemonade** splash of sunshine
- tangerine** sweet orange
- jade** exotic jewel
- safari red** kick of brick
- rattan** deep sand
- espresso** perfect chocolate
- black** most valuable player
- scuba blue** clear blue sea

ETC. ETERA

